



# CYALUME® Complete Safety Program

*Dependable, instant light...*

*...when lives depend on it.*

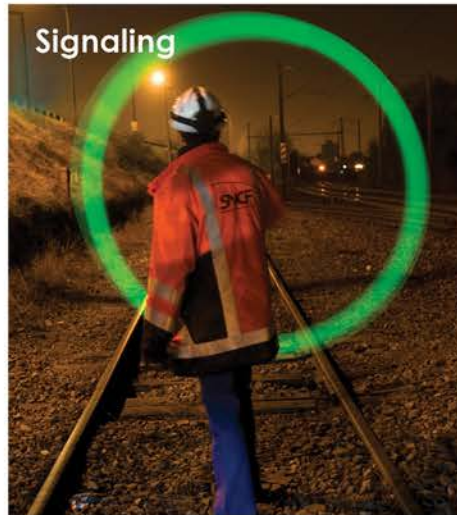
EMERGENCY PREPAREDNESS

CONTINGENCY LIGHTING

EVACUATION ILLUMINATION

RESCUE SIGNALING

MAINTENANCE OPERATION



## 6" SnapLight® LightSticks (15 cm)

With a simple bend, snap, and shake, SnapLight® (15cm) industrial grade, phthalate-free chemical lightsticks provide instant light for all emergency situations. Each SnapLight® creates 360° of illumination, and is visible up to 1 mile. They are non-toxic, non-flammable, waterproof, and generate no heat or sparks.

Contact us for a customized foil to light up your brand.



| 12 HOURS | PART#        | CASE |
|----------|--------------|------|
| GREEN    | SA8-08076BI  | 500  |
|          | SA8-108076BI | 100  |
| YELLOW   | SA8-08082BI  | 500  |
|          | SA8-108082BI | 100  |
| ORANGE   | SA8-08084BI  | 500  |
|          | SA8-108084BI | 100  |
| RED      | SA8-08078BI  | 500  |
|          | SA8-108078BI | 100  |
| 8 HOURS  | PART#        | CASE |
| BLUE     | SA8-08080BI  | 500  |
|          | SA8-108080BI | 100  |
| WHITE    | SA8-08098BI  | 500  |
|          | SA8-108098BI | 100  |

| 30 MINUTES | PART#        | CASE |
|------------|--------------|------|
| YELLOW-HI  | SA8-08086BI  | 500  |
|            | SA8-108086BI | 100  |
| RED-HI     | SA8-08088BI  | 500  |
|            | SA8-108088BI | 100  |
| WHITE-HI   | SA8-08094BI  | 500  |
|            | SA8-108094BI | 100  |

| 5 MINUTES ULTRA | PART#        | CASE |
|-----------------|--------------|------|
| ORANGE-HI       | SA8-27022BI  | 500  |
|                 | SA8-127022BI | 100  |

| CDU Empty* | PART#     | CASE          |
|------------|-----------|---------------|
| Standard   | SA2-00048 | Unit with MoQ |
| Customized | SA2-00050 | Unit with MoQ |

\*MOQ of 250 pcs.

Counter Display Unit (CDU) for 24 Sticks







## 4" CHEMLIGHT® LightSticks (10cm)

Lightweight and handy, 4" ChemLight® lightsticks are recommended for marking routes, clearing areas, vehicle lane night patrol and survival kits.

| 4" ChemLight® | PART#     | CASE |
|---------------|-----------|------|
| 6 HR GREEN    | 9-74780PF | 100  |
| 6 HR ORANGE   | 9-76300PF | 100  |



Counter Display Unit (CDU) for 24 Sticks

## 8" Ultra High-Intensity Flare Alternative® (20cm)

Developed as a safe, environmentally-friendly alternative to traditional incendiary flares currently used by law enforcement. With reflective strip, it enhances visibility up to 1 mile (1,6km) during emergencies. The attached wire stand allows easy set-up and activation. Ideally used at accident scenes, vehicle breakdowns, as hazard markers, and to alert drivers of obstacles.

| 8" Flare Alternative®              | PART#   | CASE      |
|------------------------------------|---------|-----------|
| 30 MIN ORANGE ULTRA-HI             | 9-27035 | 4 x 12-PK |
| 30 MIN ORANGE ULTRA-HI Ind. Foiled | 9-27037 | 100       |
| CDU with 24 Sticks Foiled          | 9-00401 | 4         |
| CDU Empty, for 24 Sticks           | 2-6000  | 1         |



## 10" Flare Alternative® (25cm)

With no batteries required, the 10" SnapLight® offers 360° of illumination. It fits securely in a metal bipod stand to prevent rolling and is visible up to 1 mile (1,6km). SnapLight® lightsticks are maintenance-free, non-toxic, non-flammable, and waterproof.

| 10" Flare Alternative® | PART#     | CASE      |
|------------------------|-----------|-----------|
| 2 HR GREEN             | 9-27049PF | 4 x 10-PK |
| 2 HR YELLOW            | 9-27030PF | 4 x 10-PK |
| 2 HR RED               | 9-27047PF | 4 x 10-PK |



## 12" SnapLight® LightSticks (30cm)

Widely used by Law Enforcement, mining and utility companies, the 12" SnapLight provides 3 times the brightness of a 6" lightstick. Individually wrapped in foil packaging.

| 12" SnapLight® | PART#       | CASE |
|----------------|-------------|------|
| 12 HR GREEN    | 9-2705101PF | 25   |



1 End Ring  
Non-Impact

2 End Rings  
Impact



## 15" IMPACT® LightSticks (40cm)

Also available in a non IMPACT® version, the 15" lightstick is the only one that activates on impact, providing instant illumination. When near gas or oil, or any combustible materials, the 15" IMPACT® stick is a dependable source of emergency lighting that is safe for use in all environments. Recommended for confined space lighting, vehicle repairs, building searches, bundle drops...

| 15" IMPACT® (2 End Rings)   | PART#     | CASE     |
|-----------------------------|-----------|----------|
| 12 HR GREEN                 | 9-87090PF | 4 x 5-PK |
| 12 HR YELLOW                | 9-87110PF | 4 x 5-PK |
| 12 HR RED                   | 9-87120PF | 4 x 5-PK |
| 8 HR BLUE                   | 9-87100PF | 4 x 5-PK |
| 8 HR WHITE                  | 9-87130PF | 4 x 5-PK |
| 5 MIN ORANGE-HI             | 9-87150PF | 4 x 5-PK |
| 15" Non-IMPACT (1 End Ring) | PART#     | CASE     |
| 12 HR GREEN                 | 9-03620PF | 4 x 5-PK |
| 12 HR YELLOW                | 9-06130PF | 4 x 5-PK |
| 12 HR RED                   | 9-06120PF | 4 x 5-PK |
| 8 HR BLUE                   | 9-06140PF | 4 x 5-PK |
| 8 HR WHITE                  | 9-03670PF | 4 x 5-PK |



**S.O.S.®**

When the user spins the signaling device on its lanyard, it forms a distinctive circle pattern visible up to 3 miles (4,8km) from the air and 1 mile (1,6km) on land. Ideal for rescue operations.

| S.O.S.®               | PART#     | CASE |
|-----------------------|-----------|------|
| 8 HR GREEN            | 9-42740PF | 50   |
| 5 MIN ORANGE ULTRA-HI | 9-68260PF | 50   |

**Personnel Marker Light (PML®)**

Coast Guard approved, the PML® is the superior clip-on identifying signal for rescue-at-sea or evacuation operations. Designed to be lightweight, waterproof, and buoyant, the PML® is the ideal emergency locator.

| PML®       | PART#     | CASE |
|------------|-----------|------|
| 8 HR GREEN | 9-80770PF | 50   |



Markers

Mark the Way to Safety...

**VisiPad™**

Self-adhesive, rectangular and flat, the VisiPad™ weighs less than a traditional 6" SnapLight®, but with the same overall surface area. The hook and hole feature allows VisiPad™ to be hung.

Customize your VisiPad™ with monocolour printing for MOQ>250 pcs. Additional technical fees apply.



| VisiPad™     | PART#     | CASE |
|--------------|-----------|------|
| 10 HR GREEN  | 9-27601PF | 25   |
| 10 HR YELLOW | 9-27631PF | 25   |
| 10 HR ORANGE | 9-27651PF | 25   |
| 10 HR RED    | 9-27611PF | 25   |
| 10 HR BLUE   | 9-27641PF | 25   |

**LightShape® Circle Markers**

The self-adhesive 3" LightShape® Markers (8cm) can be used for medical triage, evacuation procedures, trail marking or as a personal protective equipment. Peel the paper backing and adhere to any surface.



| LightShape®             | PART#     | CASE       |
|-------------------------|-----------|------------|
| 4 HR GREEN              | 9-50860PF | 10 x 10-PK |
| 4 HR YELLOW             | 9-42710PF | 10 x 10-PK |
| 4 HR ORANGE             | 9-42730PF | 10 x 10-PK |
| 4 HR RED                | 9-42720PF | 10 x 10-PK |
| 4 HR BLUE               | 9-42700PF | 10 x 10-PK |
| 8 HR BLUE*              | 9-50875PF | 10 x 10-PK |
| 8 HR WHITE*             | 9-50865PF | 10 x 10-PK |
| 8 HR WHITE* GREEN CROSS | 9-50866PF | 10 x 10-PK |
| 8 HR PURPLE*            | 9-50870PF | 10 x 10-PK |

\*Available with MOQ of 5000 pcs.

**FlexBands**

The 7½" FlexBand is the ideal emergency marker. FlexBands can be placed on wrists, stretchers, door handles... Combine FlexBands together to mark larger areas.



| FLEXBANDS   | PART#     | CASE      |
|-------------|-----------|-----------|
| 6 HR GREEN  | 9-85990PF | 12 x 3-PK |
| 6 HR ORANGE | 9-85970PF | 12 x 3-PK |
| 6 HR Lt RED | 9-85960PF | 12 x 3-PK |
| 6 HR BLUE   | 9-85980PF | 12 x 3-PK |

All LightSticks Accessories

Increased Performance...

**Directional Handle**

Lightweight and durable, the handle is ideal for police officers and road construction crews who require a highly visible light for signaling or directing traffic.



| ACCESSORIES        | PART#   | CASE |
|--------------------|---------|------|
| DIRECTIONAL HANDLE | 9-33450 | 25   |

**Cone Adaptor**

Cone Adaptors can be used on their own or placed on top of a safety cone for improved visibility. They are stackable and easily stored.



| ACCESSORIES  | PART#   | CASE |
|--------------|---------|------|
| CONE ADAPTER | 9-27103 | 25   |

**Magnetic Base**

**Safety Grade**

Allows a lightstick to be attached to any steel surface for maximum visibility and available with an anti-scratch cover for sensitive surfaces.



**Military Grade**

With a stronger hold and available with an anti-scratch cover.



| MAGNETIC BASE           | PART#     | CASE |
|-------------------------|-----------|------|
| SAFETY GRADE            | SA9-33460 | 12   |
| Anti-Scratch Protection | SA4-60011 | 25   |
| MILITARY GRADE          | 9-33460   | 25   |
| Anti-Scratch Protection | SA4-60010 | 25   |



## LightStation®

With an easy to locate glowing photoluminescent label on the front cover, LightStation® provides assurance that a safe light will be available when the power goes out.



## LightStation® Models 4 and 10

Designed with a fire resistant case. When the front cover is pulled open, all SnapLight® lightsticks (25 cm) activate to provide instant illumination, flooding an area with portable light for evacuees. Available in Beige and with MOQ for other colors and with a safety lock (Model L).

## LightStation® Model 20

Designed with a heavy-duty molded plastic case. When the front cover is pulled open, one SnapLight® (25 cm) activates, leaving 19 SnapLight® lightsticks for individuals to carry and use as light sources while evacuating. Available in Red.

| LightStation*** | PART#   | CASE | 10" REFILL  | PART#     | CASE |
|-----------------|---------|------|-------------|-----------|------|
| Model 4         | 9-00346 | 6    | Yellow 4 HR | 9-00352PF | 200  |
| Model 4 L*      | 9-00362 | 6    | Yellow 4 HR | 9-00351PF | 40   |
| Model 10        | 9-00343 | 4    | Red* 4 HR   | 9-00367PF | 200  |
| Model 10 L*     | 9-00353 | 4    | Red* 4 HR   | 9-00370PF | 40   |
| Model 20        | 9-00364 | 4    | Tamper Pin  | 9-00354   | 25   |

\* Available with MOQ. \*\*SnapLight® lightsticks not included in LightStation®.



## Photolum Plate

Equipped with an adhesive backing and pre-drilled holes, the Photolum Plate is easy to install and operate. Provide cost effective emergency lighting wherever it is needed.

| PHOTOLUM PLATE                     | PART#           | CASE |
|------------------------------------|-----------------|------|
| With 2x6" SnapLight® Yellow 30 MIN | LTD9-CABINPACKA | 20   |
| With 2x6" SnapLight® Green 12 HR   | LTD9-CABINPACKB | 20   |



## S.E.E.® System

Install the S.E.E.® System with glowing photoluminescent label along a designated evacuation route to provide a safe, clearly lit path throughout a building. When the front cover is pulled open, two 6" SnapLight® lightsticks activate, providing instant light to prevent slips, trips and falls. Includes 2-hour Yellow high-intensity SnapLight® (15cm) lightsticks.

| S.E.E.® System                | PART#       | CASE |
|-------------------------------|-------------|------|
| S.E.E.® w/(20) SnapLight®**** | 9-08500PF   | 10   |
| Refill 6" Yellow 2 HR****     | SA8-08505PF | 100  |
| Tamper Proof Pins             | 4-2101      | 100  |

\*\*\*Includes Mounting Hardware & 2 Pins/PK. Sold as 10 Pack System. Not Packaged for Individual Sale.  
\*\*\*\*Includes (50) Expiration Date Labels & (50) Tamper Pins.

## CYFLECT® Reflects White, Glows Bright

Cyfllect® is a range of retro-reflective and photoluminescent material for safe evacuation and personal protection.



## CYFLECT®

Reflective and self-luminous tapes, ideal for use on signs, displays, buildings, steps, stairs, and doorways. Available as sew on or adhesive in a variety of sizes. Custom colors, patterns, designs and insignia are available upon request.

## CYFLECT® PT Belt™

Cyfllect® personal marker Belts are adjustable, retro-reflective but also photoluminescent. Glow can be recharged by a headlight or any other light source.

| PT Belt™                           | PART#     | CASE |
|------------------------------------|-----------|------|
| 2" x 5,5' White PT Belt™ with Loop | 9-3012509 | Each |

PT Belt™ also available in Green, Yellow, Orange, Red and Blue.

Don't Be Caught in the Dark®



Kilonkallio 3 B, 02610 Espoo  
Tel. +358 (0)9 554 334  
sales@finnprotec.fi  
www.finnprotec.fi